

# MONTHLY MEMBERSHIP PROGRESS REPORT

District 318 E

Results as of: 1/31/2020

GMT:

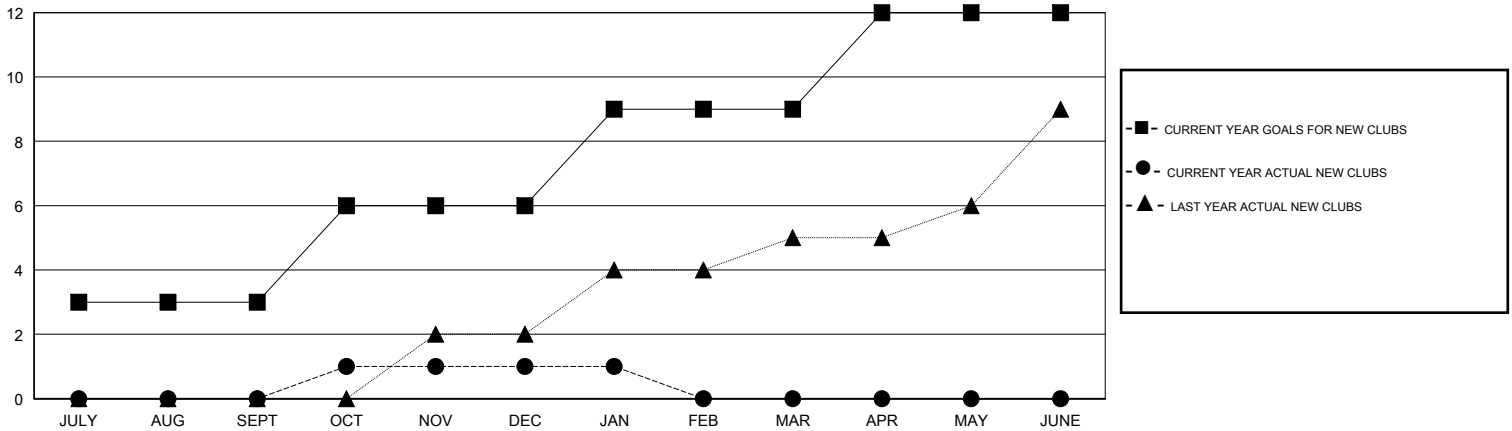
LOCATION INDIA

GMT CA

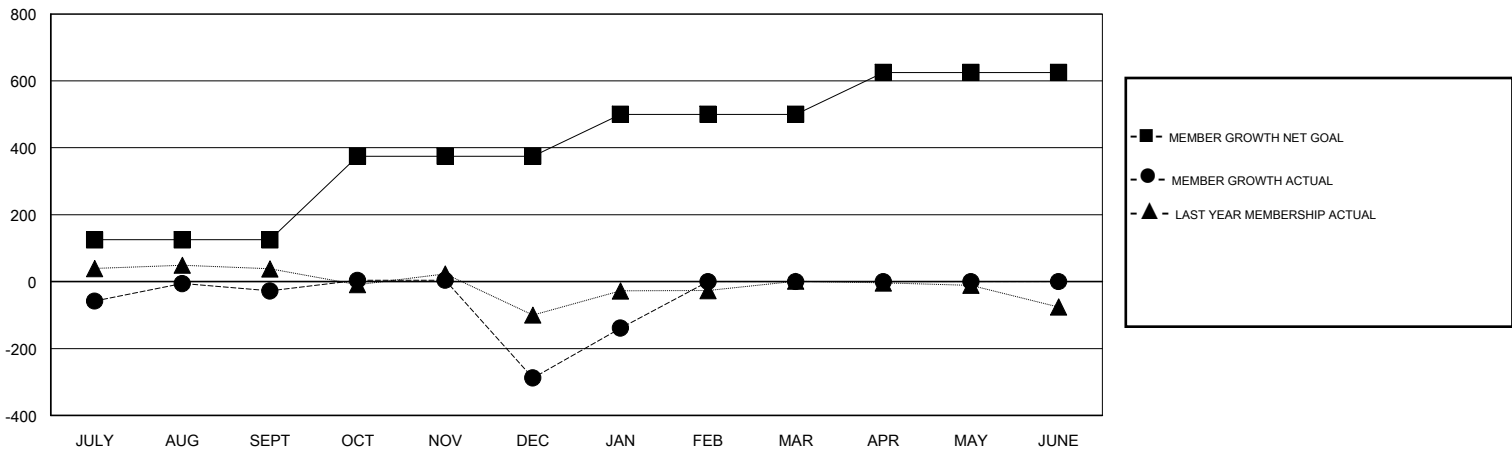
Clubs			
RESULTS FOR 2019-2020			
QUARTER	NEW CLUB GOAL	NEW CLUBS	DROPPED CLUBS
JULY/AUG/SEPT	3	0	2
OCT/NOV/DEC	3	1	6
JAN/FEB/MAR	3	0	0
APR/MAY/JUNE	3	0	0

Members			
RESULTS FOR 2019-2020			
QUARTER	MEMBER GROWTH NET GOAL	MEMBER GROWTH ACTUAL	DROPPED MEMBERS ACTUAL (including transfers)
JULY/AUG/SEPT	125	188	195
OCT/NOV/DEC	250	80	336
JAN/FEB/MAR	125	222	31
APR/MAY/JUNE	125	0	0

GOALS AND ACTUAL NEW CLUBS CUMULATIVE



GOALS AND ACTUAL MEMBERS CUMULATIVE



DROPPED CLUBS: 8	69 CLUBS OF 144 ADDED 1 OR MORE NEW MEMBERS	<b>GENDER DISTRIBUTION</b> MALE 4,362 (76.50%) FEMALE 1,340 (23.50%)
<b>DROPPED MEMBERS</b> DECEASED 13 CLUB CANCELLED 175 OTHER 374 <b>TOTAL 562</b>	<a href="#">CLICK HERE FOR CUMULATIVE MEMBERSHIP DATA</a>	TOTAL FAMILY UNIT MEMBERS 2,344 FAMILY MEMBERS PAYING HALF DUES 1,222